

At MSS, we specialize in extending fluid and component life through filtration.

## Problem

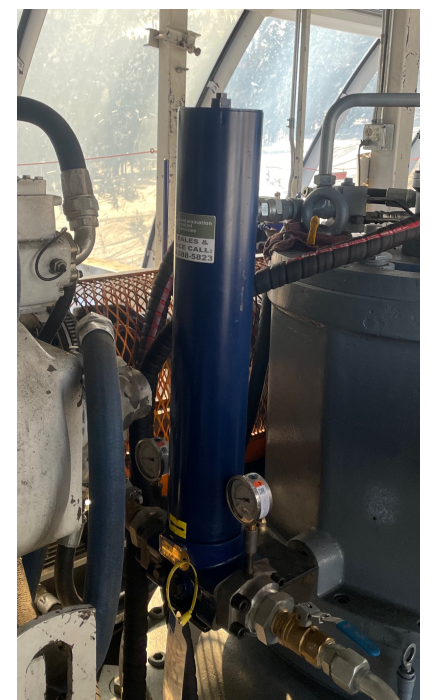
A large ski resort was experiencing a few lift gearbox failures per year. These failures came without warning and led to unneeded down time, component costs, and new oil costs.

## Solution

- The resort began installing Pall UR319 filter housings fitted with differential pressure gauges and 10um filters on every new or rebuilt gearbox.
- Differential pressure gauge checks were added to the daily lift routes to alert the crew of gearbox issues before they reach critical failure.
- Oil changes were switched from 2-year intervals to condition-based changes.

## Results

- Regular checks of the differential pressure gauges have allowed the lift crew to catch issues far before the gearbox reaches critical failure.
- No filtered gearbox has failed since the first filter housings were installed 6 years ago.
- Oil Life was extended from 2-years to 4-years
- A full return on investment in fluid cost alone was realized after the first year.
- The resort saw one year between filter changes on new gearboxes.
- Off-site oil analysis has shown the filtered gearbox oil to be cleaner after one year of use than than the oil was at install.



## Contact us today

Phone: 775-778-5454

205-388-0722

Email: [psmith.mss@gmail.com](mailto:psmith.mss@gmail.com)

[miningfilters@gmail.com](mailto:miningfilters@gmail.com)